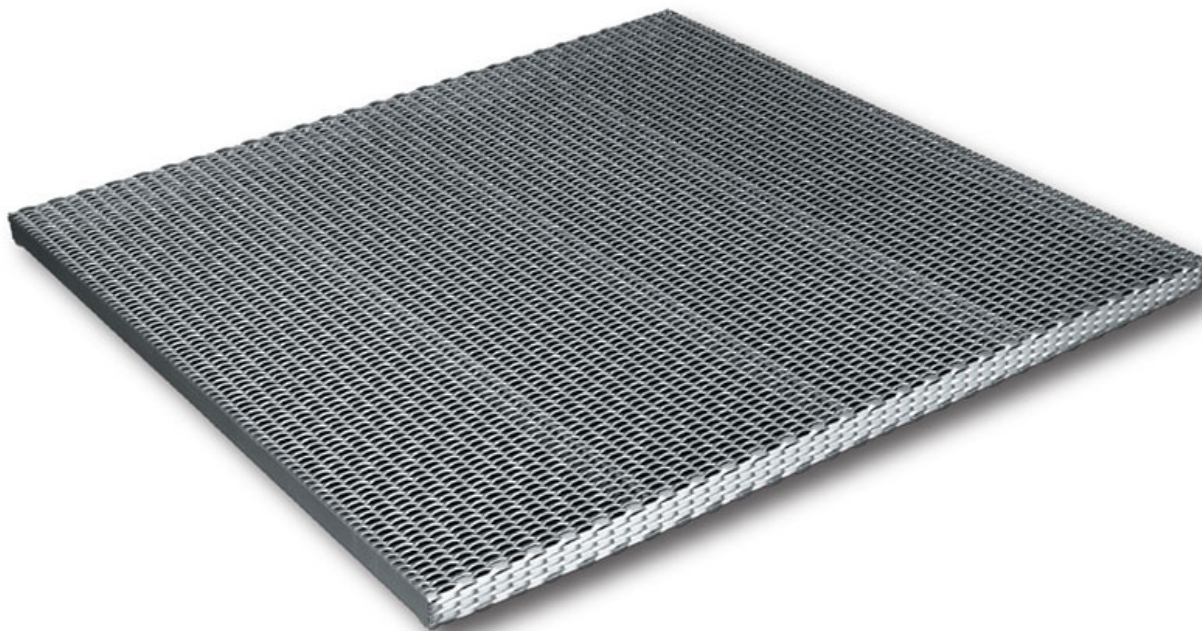


GRIGLIOFILS

Landings



Product data:

GRIGLIOFILS expanded metal landing

Mesh: FILS 21

Load capacity distributed: 510.00 kg/m²

Load capacity concentrated: 510.00 kg

Material	Nome	h mm	Landings 500x500	Landings 600x600	Landings 700x700	Landings 800x800	Landings 900x900	Landings 1000x1000	Landings 1200x1200
Carbon steel	GRIGLIOFILS landing	50.00	✓ 8.00 kg/pz	✓ 10.50 kg/pz	✓ 13.50 kg/pz	✓ 18.00 kg/pz	✓ 23.50 kg/pz	✓ 27.60 kg/pz	✓ 37.30 kg/pz
Galvanised Carbon Steel	GRIGLIOFILS landing	50.00	✓ 8.80 kg/pz	✓ 11.60 kg/pz	✓ 14.90 kg/pz	✓ 19.80 kg/pz	✓ 25.90 kg/pz	✓ 30.40 kg/pz	✓ 41.10 kg/pz